

Kalibrieradapter für EM-Koppelzange *Calibration Jig for EM Coupling Clamp*



Technische Daten:		Specifications:
Frequenzbereich, nutzbar:	10 kHz ... 1000 MHz	<i>Usable Frequency Range:</i>
Frequenzbereich, normativ:	150 kHz ... 80 MHz	<i>Frequency Range, normative:</i>
Normen:	EN / IEC 61000-4-6	<i>Standards:</i>
Nominelle Impedanz Z_{ref} :	247.6 Ω	<i>Nominal Impedance Z_{ref}:</i>
Impedanzbereich Z_{ref} :	~235 ... 258 Ω	<i>Impedance range Z_{ref}:</i>
Mittelpunktshöhe des Innenleiters über Grund:	~62 +/- 12 mm	<i>Center height of the inner conductor above ground:</i>
Durchmesser Innenleiter:	4 mm	<i>Diameter inner conductor:</i>
Anschlußart: N-Buchse		<i>N-Connector female</i>
Länge x Breite x Höhe:	1066 x 500 x 133 mm	<i>Length x Width x Height:</i>
Material:	Aluminium	<i>Material:</i>
Gewicht:	5.8 kg	<i>Weight:</i>
Lieferumfang:		Scope of Delivery:
Grundplatte, 2x Haltewinkel mit N-Buchsen, Innenleiter 624x4 mm, Innenleiter 32x4 mm, 2x 100 Ω Widerstände 6 W		<i>Baseplate, 2x Angle, inner conductor 624x4 mm, inner conductor 32x4 mm, 2x 100 Ω series resistor 6 W</i>
Optionales Zubehör:		Optional Accessories:
Leistungsdämpfungsglied:	6 dB N-Attenuator	<i>Power Attenuator:</i>
EM-Koppelzange:	EMCL 6146	<i>EM-Coupling Clamp:</i>
Entkoppelzange:	FTC 101 B	<i>Decoupling Clamp:</i>

Beschreibung:

Der Kalibrieradapter CAL EMCL dient sowohl zur Kalibrierung des Koppelfaktors und der Impedanz Z_{in} und der Entkopplung a der EM-Koppelzange EMCL 6146, als auch zum Einstellen der Prüfpegel gemäß IEC / EN 61000-4-6. Weiterhin kann mit dem CAL EMCL die Entkoppelzange FTC 101 B charakterisiert werden (Z_{in} , Entkopplung a)

Description:

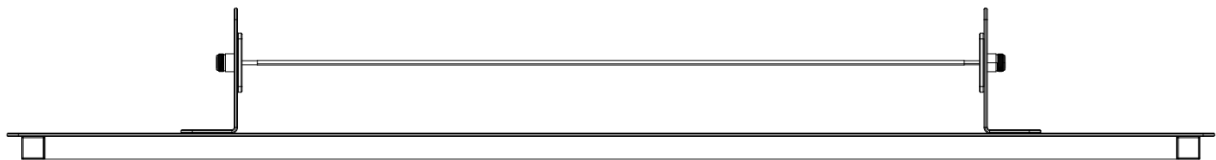
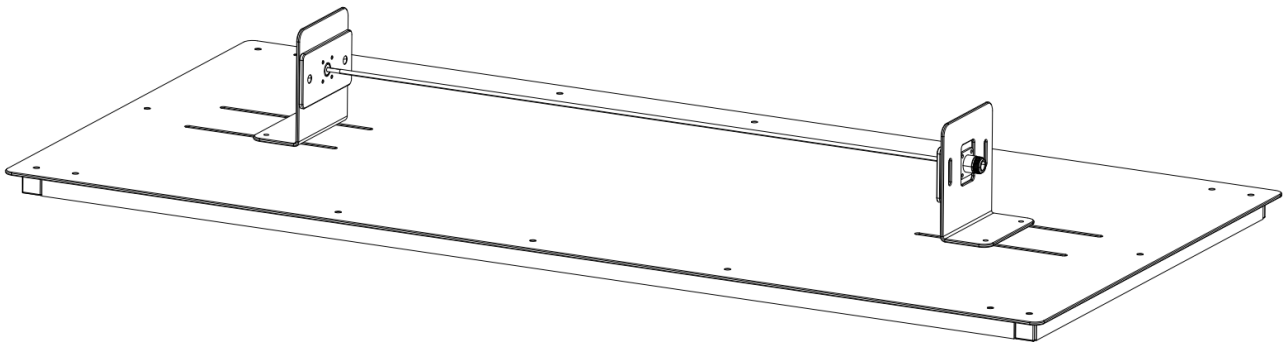
The Calibration Jig CAL EMCL can be used to calibrate the coupling factor and the impedance Z_{in} and the decoupling factor of the EM Coupling Clamp EMCL 6146 as well as for test level setting acc. to IEC / EN 61000-4-6 (Immunity to conducted disturbances, induced by radio-frequency fields). Further, the decoupling clamp FTC 101 B can be characterized (Z_{in} , decoupling a).

Sales Partner:



ABSOLUTE EMC Llc.
 Covering sales in North America
 United States, Mexico, & Canada

absolute-emc.com
 Phone:703-774-7505
 info@absolute-emc.com

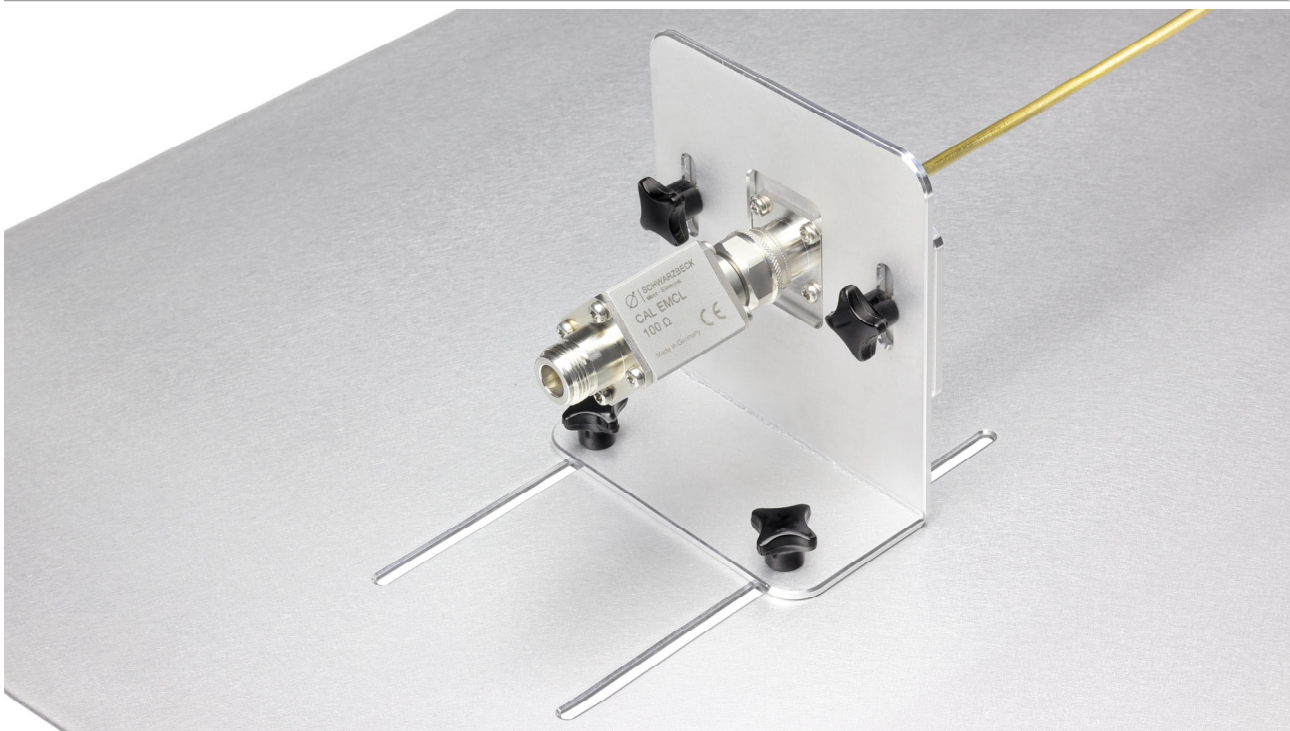


Sales Partner:

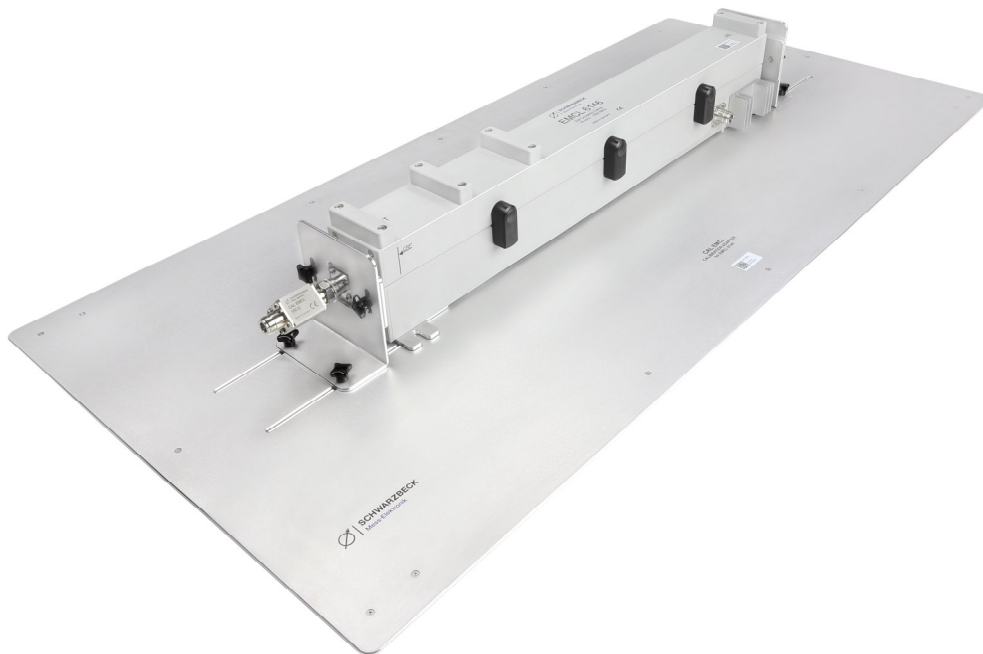


ABSOLUTE EMC LLC.
Covering sales in North America
United States, Mexico, & Canada

absolute-emc.com
Phone: 703-774-7505
info@absolute-emc.com



100 Ω Serienwiderstand mit N-Buchse / N-Stecker
100 Ω series resistor with N-female / N-male connectors



Kalibrieradapter CAL EMCL mit Injektionszange EMCL 6146
Calibration Jig CAL EMCL with injection clamp EMCL 6146

Sales Partner:



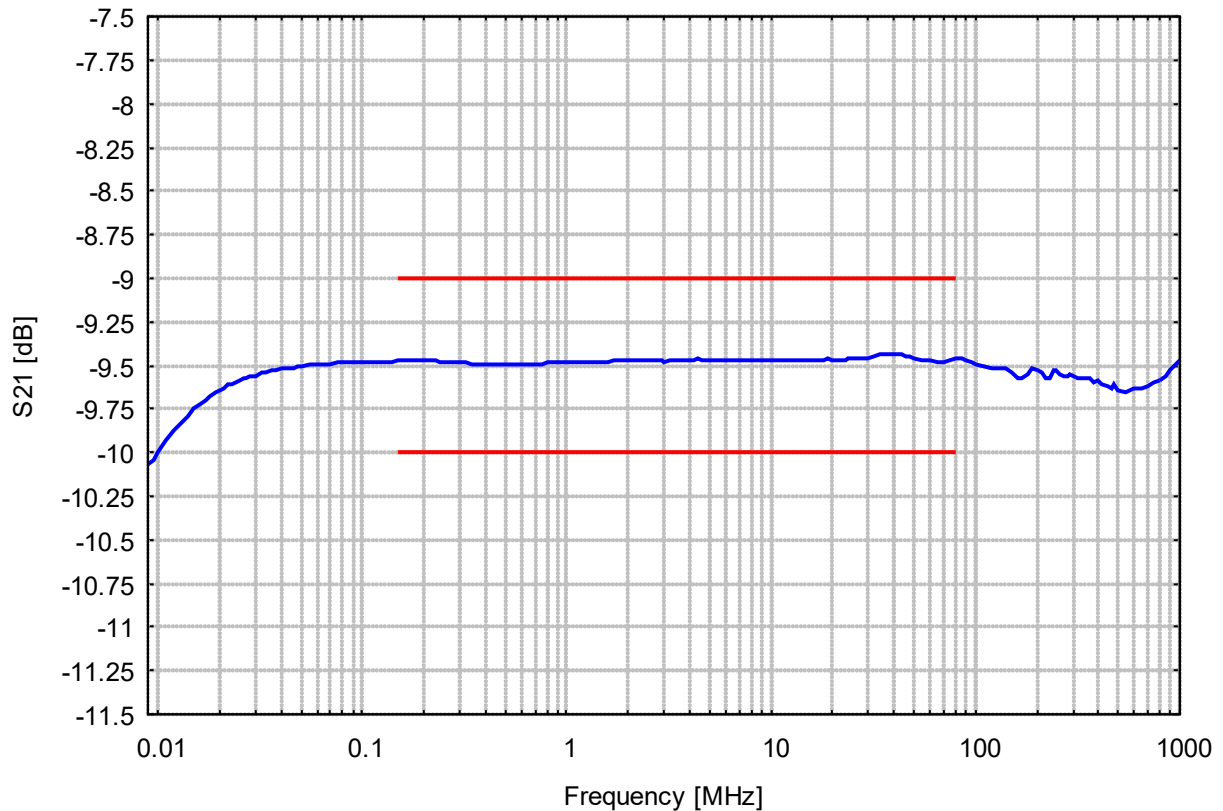
ABSOLUTE EMC LLC.
Covering sales in North America
United States, Mexico, & Canada

absolute-emc.com
Phone: 703-774-7505
info@absolute-emc.com



Kalibrieradapter CAL EMCL mit geöffneter Injektionszange EMCL 6146
Calibration Jig CAL EMCL with opened injection clamp EMCL 6146

Transmission S21 der zwei 100 Ω Serienwiderstände
Transmission S21 of the two 100 Ω series resistors



Sales Partner:

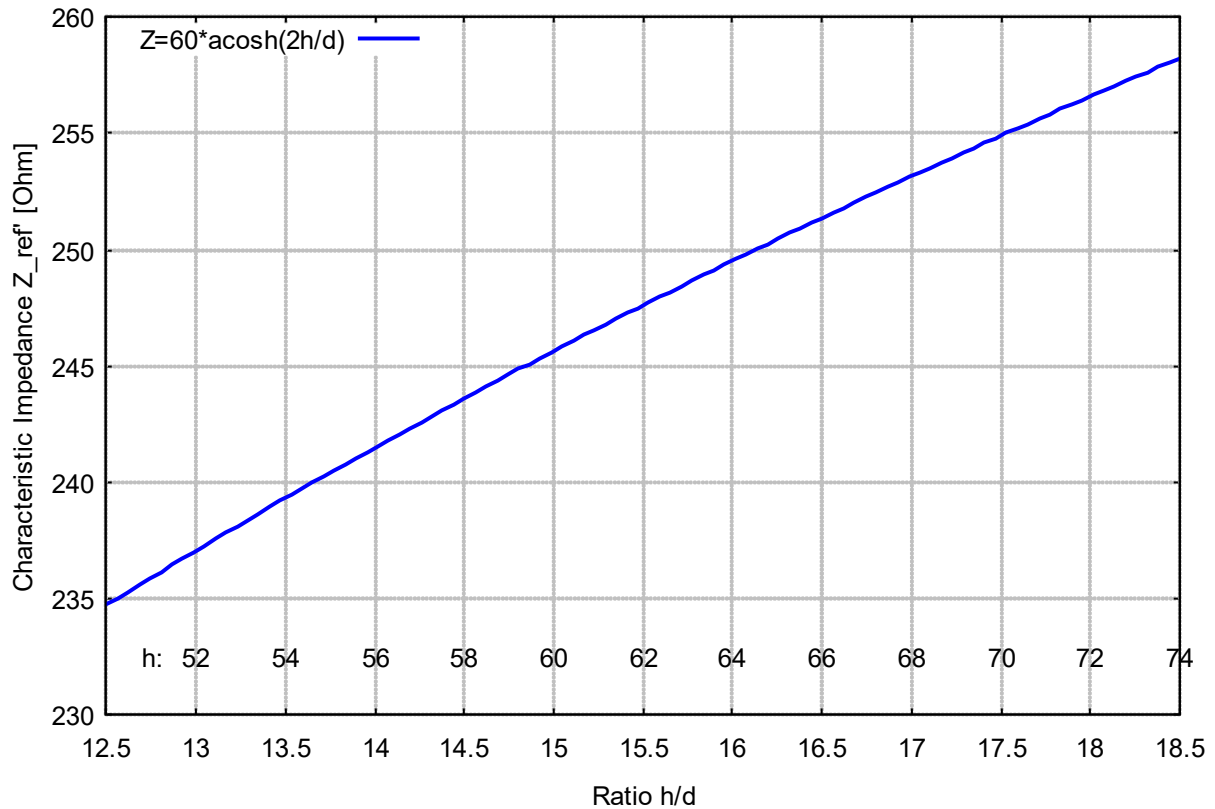


ABSOLUTE EMC LLC.
Covering sales in North America
United States, Mexico, & Canada

absolute-emc.com
Phone: 703-774-7505
info@absolute-emc.com



Impedanzbereich durch Höhenvariation des Innenleiters
Impedance range by variation of conductor height above ground



Sales Partner:



ABSOLUTE EMC LLC.
Covering sales in North America
United States, Mexico, & Canada

absolute-emc.com
Phone: 703-774-7505
info@absolute-emc.com

